



HINCKLEY
RUNNING CLUB

DERBY RUNNER CROSS-COUNTRY LEAGUE 2021/22 (RACE 5)

BOSWORTH BATTLEFIELD HERITAGE CENTRE 6th March 2022

Race Licence Number: CC2022/0324

Location

Bosworth Battlefield Heritage Centre, Ambion Lane, Sutton Cheney, Nuneaton CV13 0AD.

Directions

A447 from Coalville to Hinckley take a right turn to Sutton Cheney.
A447 from Hinckley to Market Bosworth take a left turn to Sutton Cheney.

Parking

CAR SHARING ESSENTIAL – 3 OR MORE TO A CAR PLEASE!

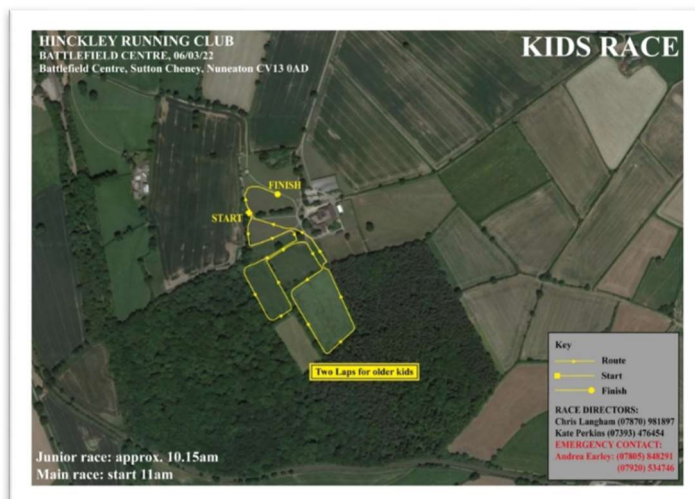
We have been granted permission to use designated sections of the car park and are not allowed into any other areas. Once this is full **ALL** cars will be expected to park on the field. Please note – there is a designated disabled parking area available to use.

There is **NO** parking charge – this is included in the adult race fee.

Course

Junior race: 10.15am – PLEASE NOTE THE EARLIER START TIME!

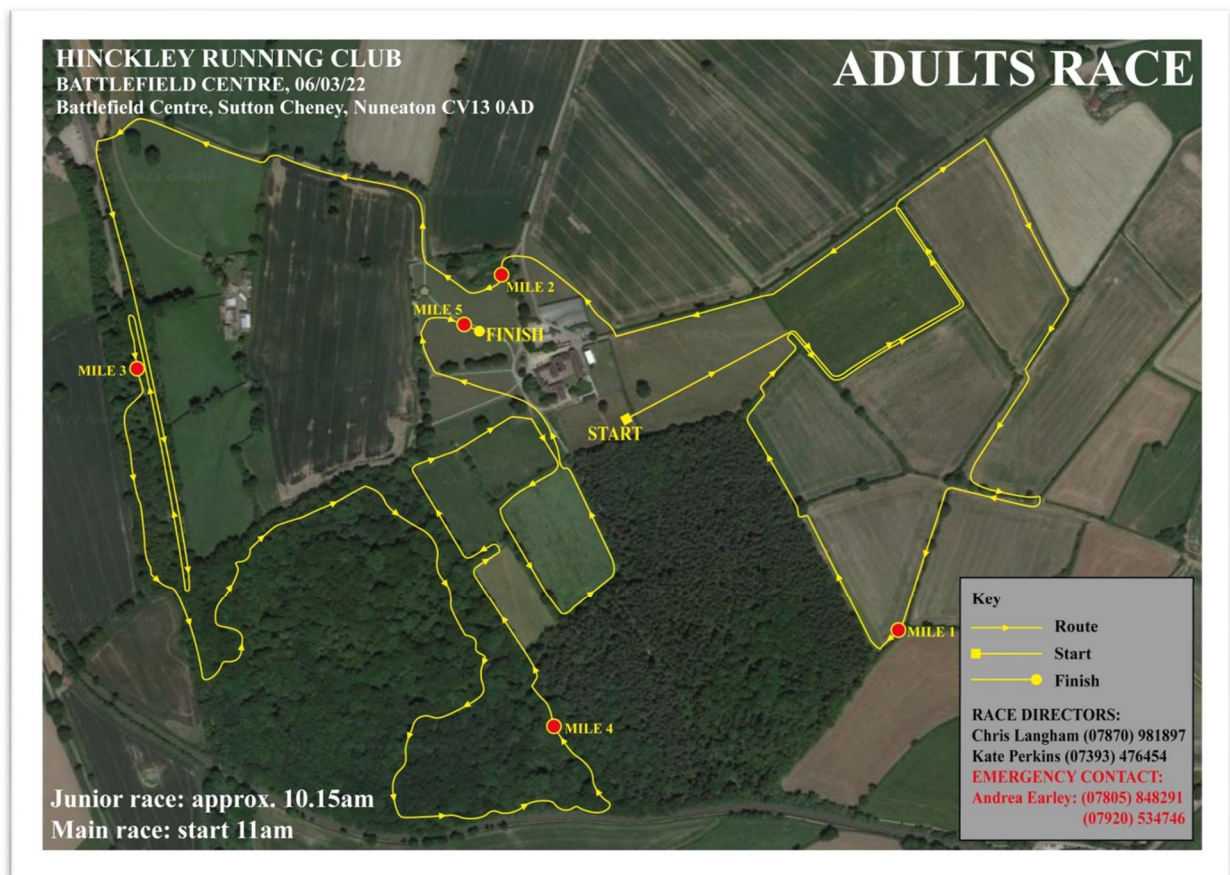
One or two laps of fields, school years 3 - 6 approx 1 mile, 7 – 12 approx 2 miles



Adult Race: 11am (This will **NOT** be a split start race so please be aware of this) Also note there may be a short delay to the start of the adult race due to the juniors' medal ceremony which will take place immediately after the junior race has finished. 5.1 miles approximately. The course is a mixture of fields, track, muddy trails and woods with wet areas. There are 2 small tarmac sections back up by the car park and numerous tree stumps, roots and a few fallen trees in the woods.

Sadly, the infamous Bosworth Bog, prolific consumer of shoes we all swore were tied on tightly, has had to be removed as it has become so boggy it is more suited to the Bog Snorkeling championships than a XC race, although we will review the situation in the hope it dries out sufficiently to claim a few more victims....

Entry Fee: £6 per person Adult race minimum age 17



Footwear

Spikes, or trail shoes – however please note the course includes sections of hard gravel track.

Toilets

Toilets are available in the Battlefield Heritage Centre – cardboard will be put down to maintain cleanliness – however please be courteous to Battlefield Centre visitors and do not use these if you are very muddy! Please do NOT use the toilets opposite

the restaurant – this is at the request of the Battlefield Centre. 3 x Portaloos will also be available on the field near the tent and finish area.

Changing Facilities

None

Tents

There will be a designated area for club tents next to the finish area.

Refreshments

Available at The Tithe Barn restaurant in the Battlefield Heritage Centre.

Post-Race Venue

After Race Venue, results and adult presentation with room for approx 50-70 people:
The New Plough Inn, 24 Leicester Road, Hinckley, Leicestershire LE10 1LS – 8 miles from race event,

Parking at St Peter's Catholic Church opposite – **please use the overflow car park** – go left past the Mary Forryan building.

Contacts:

Emergency contact on the day (Voice or text's only):

Andrea Earley – 07805 848291 or 07920 534746

Organisers:

Chris Langham – 07870 980987 – Race Director

Kate Perkins – 07393 476454 – Co-Organiser

Please do NOT use these numbers on the day – we will be running!

Please Note:

All runners enter at their own risk. The organizers will in no way be held responsible for any loss or damage to property or for any injury incurred.

Run with kind permission of Bosworth Battlefield Heritage Centre and the landowner.
